

**SHERLINE
PRODUCTS**
INCORPORATED 1974

MORSE #1 BLANK

P/N 3055

The Morse #1 blank is made from 1.25" diameter free machining steel and is available so that you may make your own custom tool holders. The blank end billet is 1.00" long. Below are some drawings suggesting ways to make holders for end mills, fly cutters and slitting saws. The proper taper fit is already machined onto the tapered end. You need only drill, tap or slot the blank to fit your special tooling needs.

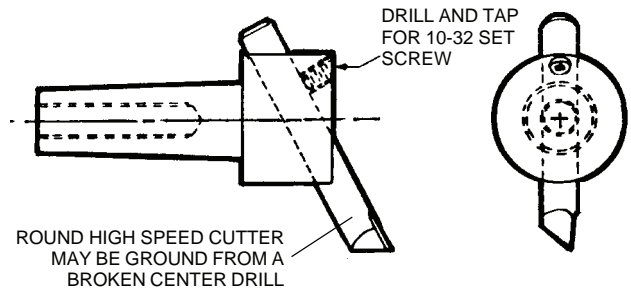


FIGURE 2--Making a fly cutter.

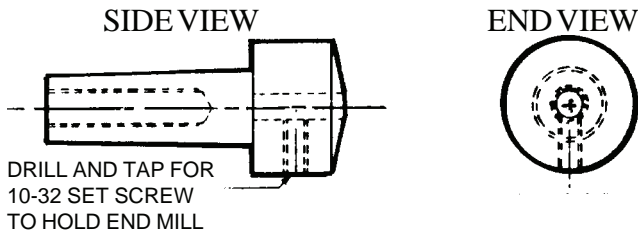


FIGURE 1--End mill holder.

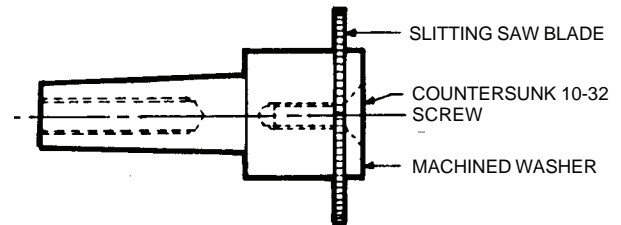


FIGURE 3--Making a slitting saw holder.

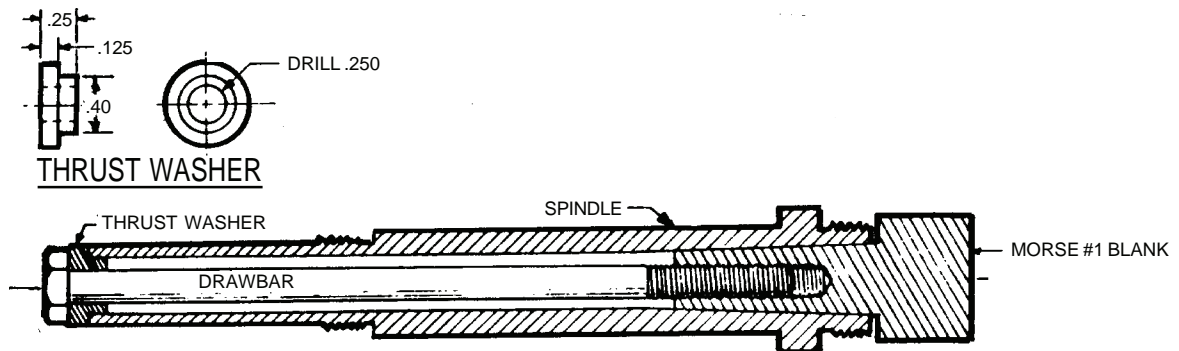


FIGURE 4—Cross-section of headstock spindle showing Morse blank, drawbar and thrust washer in position.